

“QUICK LOCK” PIN

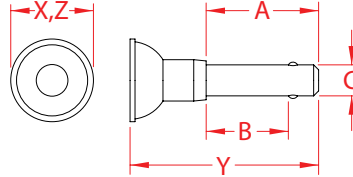
316 STAINLESS STEEL



Import



Precision
Cast



ITEM	A	B	C (size)	X (height)	Y (length)	Z (width)	WLL (lb)	WT (lb)	PACKAGING TYPE	EACH (qty)	INNER (qty)	CARTON (qty)	UPC
S0375-0515	0.75"	0.50"	3/16"	0.75"	1.50"	0.75"	2,575	0.02	POLYBAG	1	50	500	791506043591
S0375-0520	1.00"	0.75"	3/16"	0.75"	1.75"	0.75"	2,575	0.03	POLYBAG	1	50	500	791506043607
S0375-0525	1.25"	1.00"	3/16"	0.75"	2.00"	0.75"	2,575	0.03	POLYBAG	1	50	500	791506043614
S0375-0540	1.75"	1.50"	3/16"	0.75"	2.50"	0.75"	2,575	0.04	POLYBAG	1	50	500	791506043621
S0375-0550	2.25"	2.00"	3/16"	0.75"	3.00"	0.75"	2,575	0.04	POLYBAG	1	50	500	791506043638
S0375-0715	0.75"	0.50"	1/4"	0.75"	1.50"	0.75"	4,600	0.04	POLYBAG	1	50	500	791506043645
S0375-0725	1.25"	1.00"	1/4"	0.75"	2.00"	0.75"	4,600	0.04	POLYBAG	1	50	500	791506043652
S0375-0732	1.50"	1.25"	1/4"	0.75"	2.25"	0.75"	4,600	0.05	POLYBAG	1	50	300	791506043669
S0375-0740	1.75"	1.25"	1/4"	0.75"	2.50"	0.75"	4,600	0.05	POLYBAG	1	50	300	791506043676
S0375-0750	2.25"	2.00"	1/4"	0.75"	3.00"	0.75"	4,600	0.05	POLYBAG	1	50	300	791506043683
S0375-0820	1.00"	0.75"	5/16"	0.75"	1.75"	0.75"	7,200	0.05	POLYBAG	1	50	300	791506043690
S0375-0825	1.25"	1.00"	5/16"	0.75"	2.00"	0.75"	7,200	0.06	POLYBAG	1	50	300	791506043706
S0375-0840	1.75"	1.50"	5/16"	0.75"	2.50"	0.75"	7,200	0.08	POLYBAG	1	50	300	791506043713
S0375-0850	2.25"	2.00"	5/16"	0.75"	3.00"	0.75"	7,200	0.10	POLYBAG	1	50	300	791506043720
S0375-0865	2.75"	2.50"	5/16"	0.75"	3.50"	0.75"	7,200	0.12	POLYBAG	1	50	250	791506043737
S0375-1025	1.38"	1.00"	3/8"	1.00"	2.20"	1.00"	10,300	0.08	POLYBAG	1	25	250	791506043744
S0375-1040	1.88"	1.50"	3/8"	1.00"	2.70"	1.00"	10,300	0.10	POLYBAG	1	25	250	791506043751
S0375-1050	2.38"	2.00"	3/8"	1.00"	3.20"	1.00"	10,300	0.12	POLYBAG	1	25	200	791506043768
S0375-1065	2.88"	2.50"	3/8"	1.00"	3.70"	1.00"	10,300	0.14	POLYBAG	1	25	200	791506043775

NOTE:

ALL “QUICK” & “QUICKLOCK” PIN WORKING LOADS ARE CALCULATED IN DOUBLE SHEAR AND NOT AS PULL OUT FORCE, WHICH IS UNRATED. ALL DIMENSIONS ARE NOMINAL (+/- 3%) AND ARE SUBJECT TO CHANGE WITHOUT NOTICE.